



# studiopartner

the professional workflow solution from Colorworld

# Software Installation

As the Studiopartner software runs on Java, the correct version of Java software needs to be installed on the computer.

## Java runtime environment

The first time you launch the Studiopartner application it will happen by clicking on a link on Colorworld's web site. When you click the link the Studiopartner system will check to see if you have a proper version of Java installed on your machine. If you do not it will first download and run a Java Installer.

If the Java Installer fails to install Java on your machine and you're using Windows, try to use the Windows (Offline Installation) available at [www.java.com](http://www.java.com) .

The screenshot shows the 'Manual Download' section of the Java website. At the top left is the Java logo with the text 'Sun Microsystems'. The main heading is 'Manual Download' in yellow, with the instruction 'To complete your download, please select from the list below.' Below this are 'HELP' and 'FAQ' links. On the right side, there are three navigation buttons: 'Free Download << Java Software for the Desktop', 'For Your Lifestyle >>', 'For Your Business >>', and 'For Developers >>'. The main content area contains a paragraph about completing the download and a section titled 'Get Java Software on CD'. Below this is a list of operating systems with their respective download links and 'Download' buttons:

- Windows (Installation) - [Instructions](#) [Download]
- Windows (Offline Installation) - [Instructions](#) [Download]
- Macintosh (Apple Mac OS X) - [Instructions](#) → [apple.com/java](http://apple.com/java)
- Macintosh (Apple Mac OS 9 & earlier) - [Instructions](#) → [developer.apple.com](http://developer.apple.com)
- Solaris™ SPARC™ (32-bit) - [Instructions](#) [Download]
- Solaris™ SPARC™ (64-bit) - [Instructions](#) [Download]
- Solaris™ x86 (Solaris 7, 8, 9) - [Instructions](#) [Download]

This installer will allow you to save it to any location on your hard drive, so you can install Java as you would any Windows application. This method may succeed when the browser integrated installer fails due to browser security settings or if Windows can't find the integrated installer in the temporary directory.

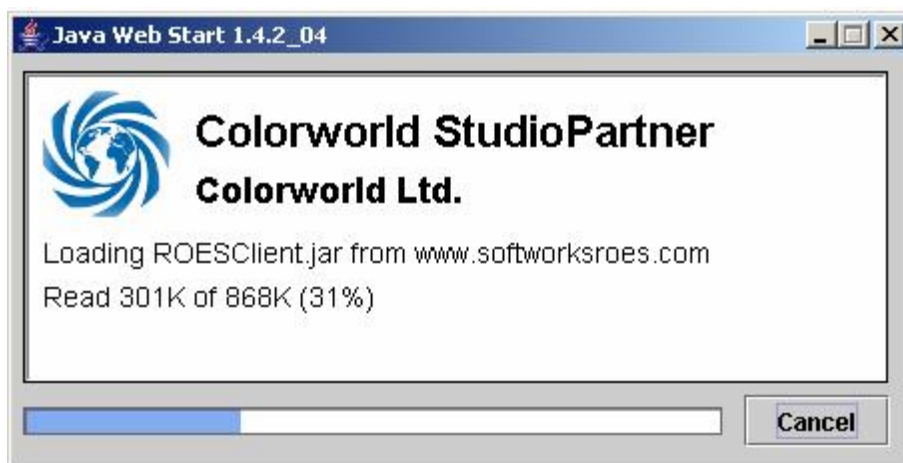
The offline installer is always the best second attempt, since it doesn't conflict with browser security settings or browser nuances.

If you're using a Mac, you can reinstall Java via the Software Update application which is part of Mac OS X. If you encounter graphics problems such as controls not appearing, upside-down windows, or other anomalies, this typically means that the Java on your machine has been corrupted and needs to be reinstalled.

Once you've installed Java, try again to launch the application from the Colorworld web page.

## Studiopartner application

When the Studiopartner application is launched what actually happens is that Java Web Start will launch the application for us. The first thing that Java Web Start does is to verify that you have the latest version of the Studiopartner application. In case you don't, the latest version will be downloaded automatically. Since this is the first time you launch the Studiopartner application a download of the latest version is necessary. The Studiopartner application is fairly small and should download quickly to your computer.



When the application has been downloaded, Java Web Start will alert you to the fact that the application is requesting unrestricted access to your machine and ask you if you want to allow the application to run.

